



MEMORANDUM

TO: The Commonwealth Transportation Board

THROUGH: Thelma Drake
Agency Director

FROM: Kevin Page
Chief of Rail Transportation

DATE: February 17, 2010

SUBJECT: Monthly Amtrak Performance Report

DRPT is pleased to present the monthly performance report for Amtrak service in Virginia, summarizing December 2009 performance data. This monthly report provides a snapshot of current performance and recent trends. DRPT continues to work with Amtrak to refine data and to ensure that this monthly report is comprehensive.

The following key facts are based on December 2009 results and a year-over-year comparison of trends for December 2008 and December 2009.

Key Facts

- Statewide year over year comparisons:
 - Virginia statewide Amtrak ridership for December 2009 increased 15 percent, as compared to December 2008, to 104,675.
 - Statewide on-time performance for all Amtrak trains in Virginia was 57.3 percent in December 2009, a decrease of 5.7 percent as compared to December 2008.
 - The Northern Virginia district accounts for the majority of Amtrak ridership at 35.4 percent, and the district with the greatest increase in ridership for December 2009 as compared to December 2008 is the Lynchburg district at 86 percent or 2,547 additional passengers.
 - December 2009 included two additional weekdays and the same number of weekend days as compared to December 2008.

- Statewide station comparisons:
 - Top five Virginia stations by total number of passengers in December 2009:

| | |
|--------------------|--------|
| 1. Staples Mill | 24,148 |
| 2. Lorton | 21,869 |
| 3. Newport News | 12,864 |
| 4. Alexandria | 11,659 |
| 5. Charlottesville | 7,693 |

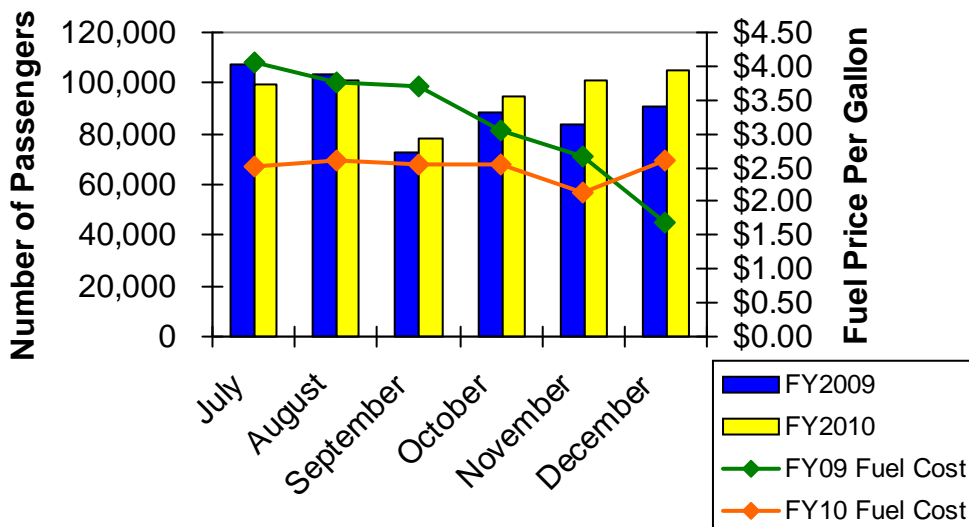
 - Top five Virginia stations by percentage of passenger growth in December 2009 as compared to December 2008:

| | |
|--------------------|------|
| 1. Lynchburg | 107% |
| 2. Culpeper | 93% |
| 3. Charlottesville | 52% |

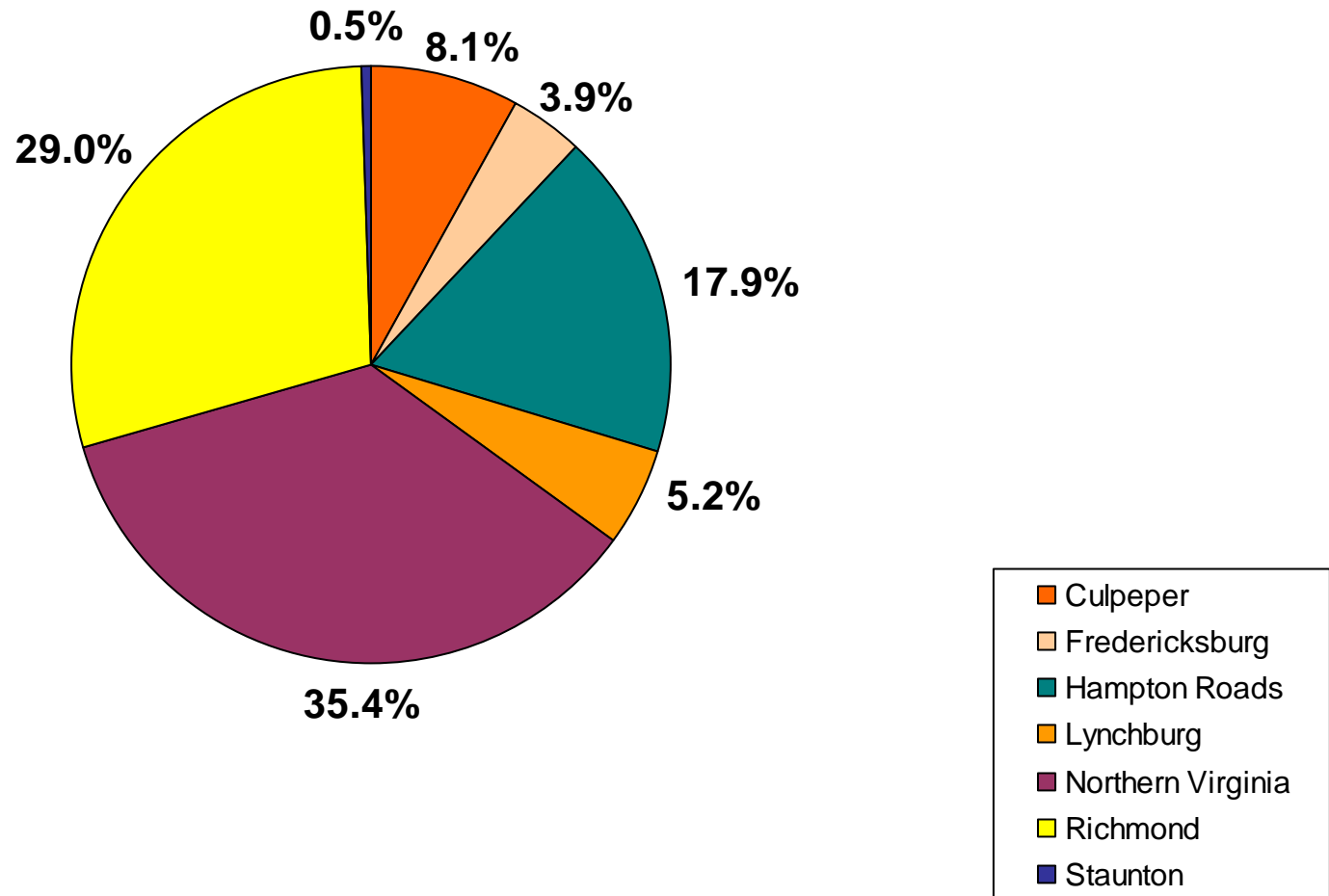
- 4. Manassas 45%
- 5. Norfolk Bus Stop 25%

- Virginia-sponsored Amtrak service:
 - Lynchburg route service began October 1, 2009
 - Total Lynchburg route ridership credited to Virginia in December 2009 was 11,200, exceeding the monthly target of 4,340 by 158 percent.
 - Total Lynchburg route revenue credited to Virginia in December 2009 was \$641,383.56, exceeding the monthly target of \$219,139 by 193 percent.
 - On-time performance for the Lynchburg route exceeded the statewide average by 17.7 percent, with 75 percent on time performance in December 2009.
 - Similar to transit ridership patterns, Amtrak ridership in Virginia fluctuates seasonally and as these monthly ridership reports are developed, seasonal trends will be tracked.
 - Top five bi-directional city pairs for the new Lynchburg route in December 2009:
 1. Charlottesville—New York 1,746
 2. Charlottesville—Washington, D.C. 1,667
 3. Lynchburg—Washington, D.C. 1,301
 4. Lynchburg—New York 1,211
 5. Charlottesville—Philadelphia 453

FY2009-FY2010 Amtrak Ridership and Fuel Cost Comparison

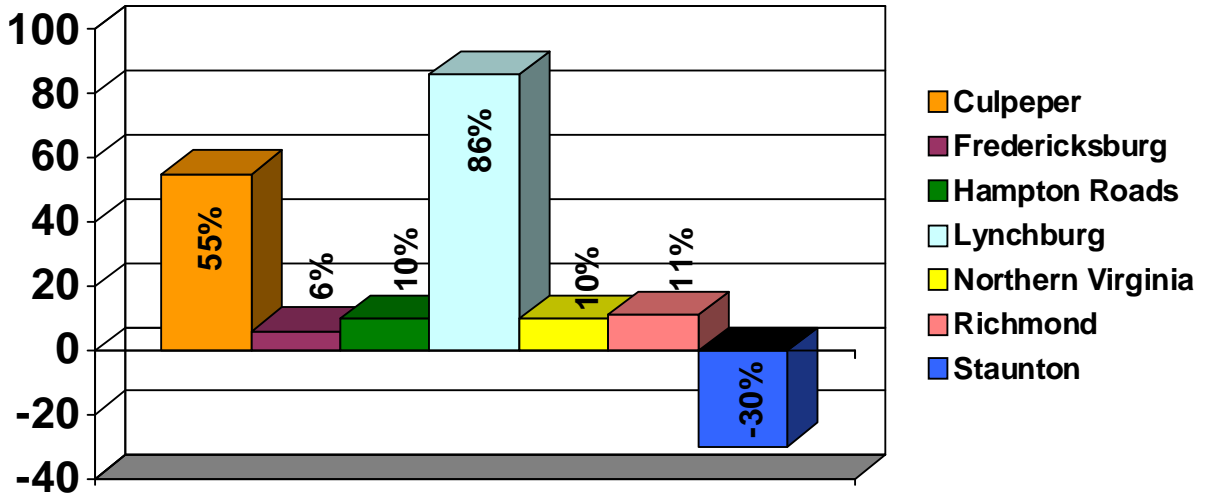


December 2009 Amtrak Ridership by District



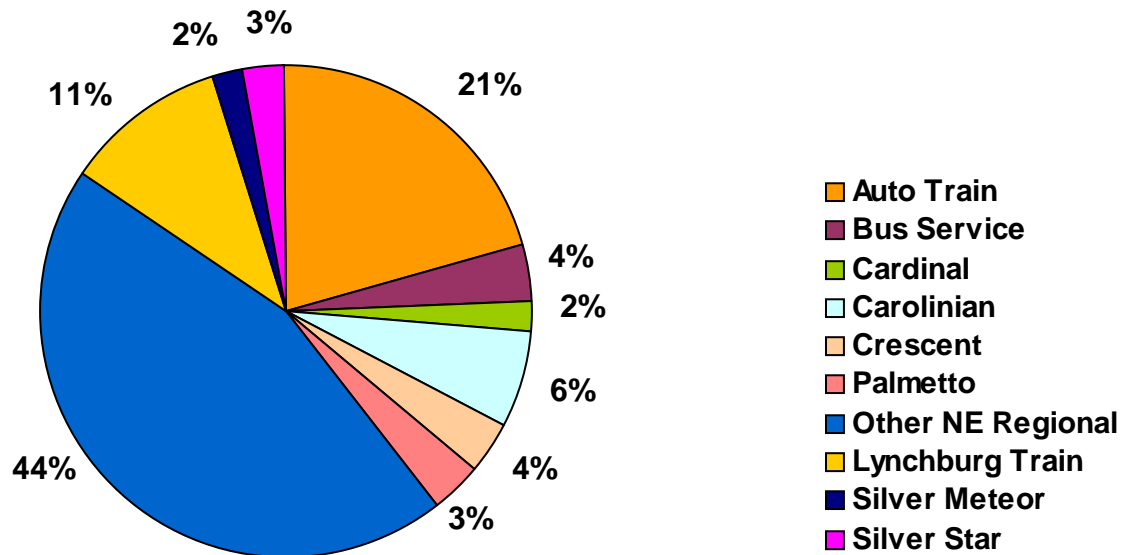
The Salem and Bristol districts are excluded because they currently do not have Amtrak service. Percentages may not add to 100 due to rounding.

Percentage Ridership Change By District December 2008-December 2009



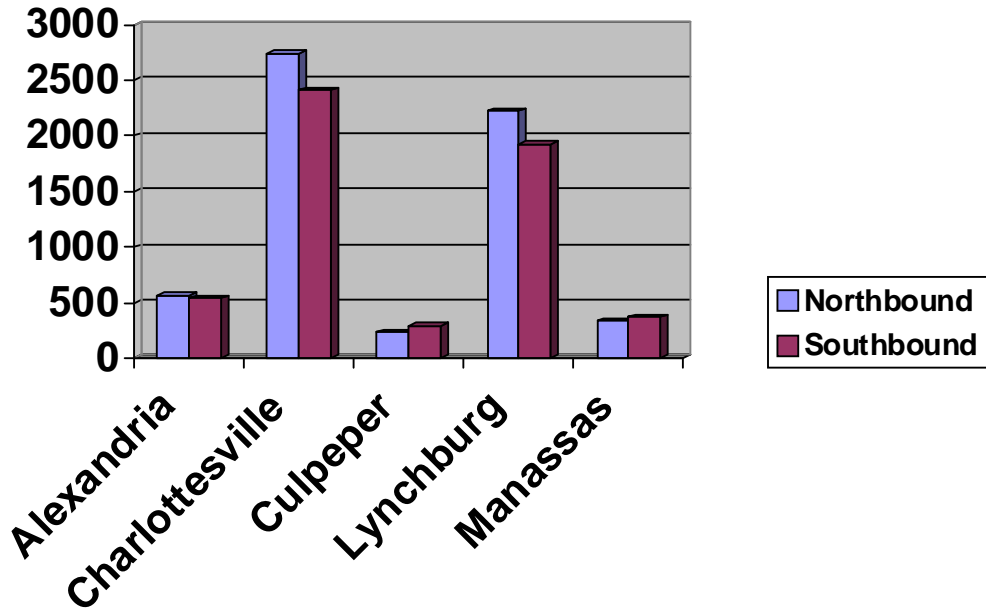
Statewide Amtrak ridership increased 15 percent

December 2009 Statewide Amtrak Ridership By Service

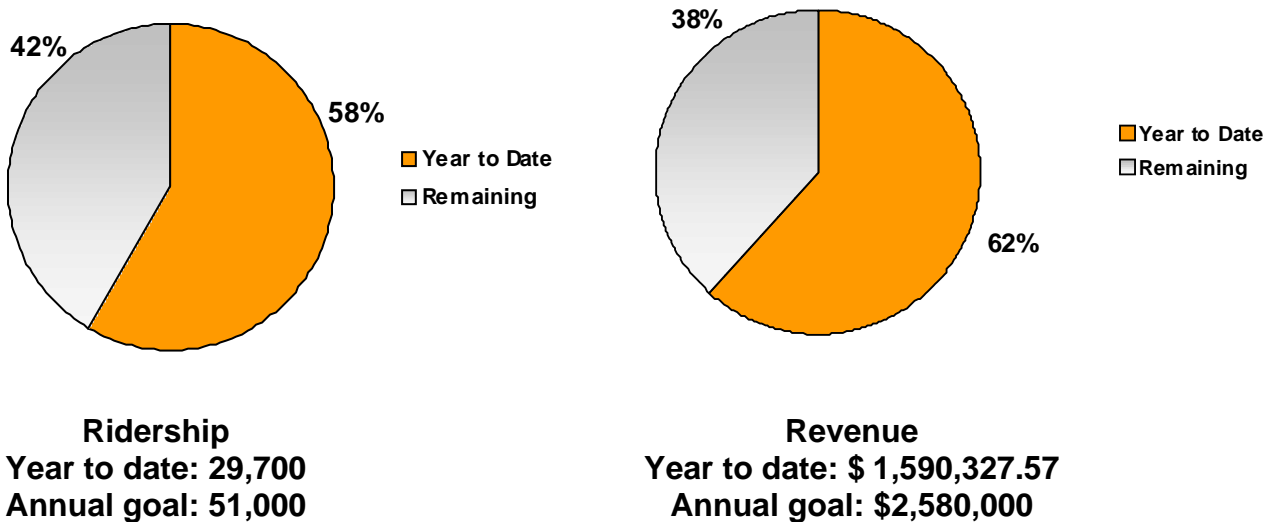


Total I-95 corridor: 84%, Total I-81/Route 29 corridor: 16%

December 2009 Ridership Direction New Lynchburg Service



New Lynchburg Route Progress Toward Annual Goals December 2009



December 2009 Amtrak Virginia Performance Report

| | Total Passengers December 2009 | Total Passengers December 2008 | Percent Change | Fiscal YTD 2010 (July 2009 - December 2009) | Fiscal YTD 2009 (July 2008 - December 2008) | Percent Change |
|---|-----------------------------------|-----------------------------------|-------------------|---|---|-------------------|
| Transportation District | | | | | | |
| Culpeper District | | | | | | |
| Charlottesville (CVS) | 7,693 | 5,048 | 52% | 37,439 | 30,326 | 23% |
| Culpeper (CLP) | 752 | 390 | 93% | 3,437 | 2,687 | 28% |
| Culpeper District Total | 8,445 | 5,438 | 55% | 40,876 | 33,013 | 24% |
| Fredericksburg District | | | | | | |
| Fredericksburg (FGB) | 4,061 | 3,840 | 6% | 23,436 | 21,726 | 8% |
| Fredericksburg District Total | 4,061 | 3,840 | 6% | 23,436 | 21,726 | 8% |
| Hampton Roads District | | | | | | |
| Newport News (NPN) | 12,864 | 11,302 | 14% | 72,759 | 73,109 | 0% |
| Norfolk Bus Stop (NFK) | 1,130 | 907 | 25% | 6,423 | 6,151 | 4% |
| Virginia Beach Bus Stop (VAB) | 564 | 479 | 18% | 4,480 | 4,751 | -6% |
| Williamsburg (WBG) | 4,153 | 4,250 | -2% | 26,776 | 27,374 | -2% |
| Hampton Roads District Total | 18,711 | 16,938 | 10% | 110,438 | 111,385 | -1% |
| Lynchburg District | | | | | | |
| Danville (DAN) | 665 | 608 | 9% | 4,981 | 3,185 | 56% |
| Lynchburg (LYH) | 4,828 | 2,338 | 107% | 18,209 | 12,411 | 47% |
| Lynchburg District Total | 5,493 | 2,946 | 86% | 23,190 | 15,596 | 49% |
| Northern Virginia District | | | | | | |
| Alexandria (ALX) | 11,659 | 10,220 | 14% | 67,375 | 62,227 | 8% |
| Franconia-Springfield (FRS) | 239 | 211 | 13% | 1,410 | 1,552 | -9% |
| Lorton (LOR) | 21,869 | 20,532 | 7% | 120,038 | 113,940 | 5% |
| Manassas (MSS) | 1,226 | 843 | 45% | 5,758 | 4,760 | 21% |
| Quantico (QAN) | 1,493 | 1,353 | 10% | 8,331 | 8,001 | 4% |
| Woodbridge (WDB) | 616 | 645 | -4% | 3,586 | 3,541 | 1% |
| Northern Virginia District Total | 37,102 | 33,804 | 10% | 206,498 | 194,021 | 6% |
| Richmond District | | | | | | |
| Ashland (ASD) | 1,797 | 1,735 | 4% | 9,576 | 8,733 | 10% |
| Main Street (RVM) | 2,399 | 1,941 | 24% | 14,007 | 12,885 | 9% |
| Petersburg (PTB) | 1,987 | 1,893 | 5% | 11,757 | 10,691 | 10% |
| Staples Mill (RVR) | 24,148 | 21,689 | 11% | 133,772 | 133,267 | 0% |
| Richmond District Total | 30,331 | 27,258 | 11% | 169,112 | 165,576 | 2% |

| Staunton District | | | | | | |
|-----------------------------------|---|---|---------------------------|--|--|---------------------------|
| Clifton Forge (CLF) | 186 | 305 | -39% | 1,988 | 2,300 | -14% |
| Staunton (STA) | 346 | 457 | -24% | 3,071 | 3,108 | -1% |
| Staunton District Total | 532 | 762 | -30% | 5,059 | 5,408 | -6% |
| TOTAL STATEWIDE PASSENGERS | 104,675 | 90,986 | 15% | 578,609 | 546,725 | 6% |
| Ridership By Service* | Total Passengers December 2009 | Total Passengers December 2008 | Percent Change | Fiscal YTD 2010 (July 2009 - December 2009) | Fiscal YTD 2009 (July 2008 - December 2008) | Percent Change |
| Auto Train | 21,869 | 20,532 | 7% | 120,038 | 113,940 | 5% |
| Bus Service | 3,755 | 3,601 | 4% | 25,823 | 27,220 | -5% |
| Cardinal | 2,113 | 2,821 | -25% | 17,272 | 18,429 | -6% |
| Carolinian | 6,492 | 5,803 | 12% | 35,362 | 34,371 | 3% |
| Crescent | 3,684 | 7,544 | -51% | 30,457 | 42,252 | -28% |
| New Lynchburg Service | 11,643 | n/a | n/a | 31,034 | n/a | n/a |
| Other Northeast Regional | 46,689 | 42,808 | 9% | 242,927 | 264,162 | -8% |
| Palmetto | 3,465 | 3,085 | 12% | 20,923 | 17,861 | 17% |
| Silver Meteor | 2,045 | 2,008 | 2% | 11,727 | 11,647 | 1% |
| Silver Star | 2,920 | 2,784 | 5% | 16,688 | 16,716 | 0% |
| TOTAL RIDERSHIP BY SERVICE | 104,675 | 90,986 | 15% | 552,251 | 546,598 | 1% |
| On-Time Performance** | December 2009 | December 2008 | Percent Change | Fiscal YTD 2010 (July 2009 - December 2009) | Fiscal YTD 2009 (July 2008 - December 2008) | Percent Change |
| Statewide | 57.3% | 63.0% | -5.7% | 60.3% | 53.5% | 6.8% |
| New Lynchburg Service | 75.0% | n/a | n/a | 78.0% | n/a | n/a |

*Passenger data does not directly correspond to Virginia ridership credit on state-sponsored trains.

**Statewide fiscal year-to-date on-time performance is calculated as an average of the year-to-date data. On-time performance for the new Lynchburg service is available from the month the service started (October 2009) and forward.